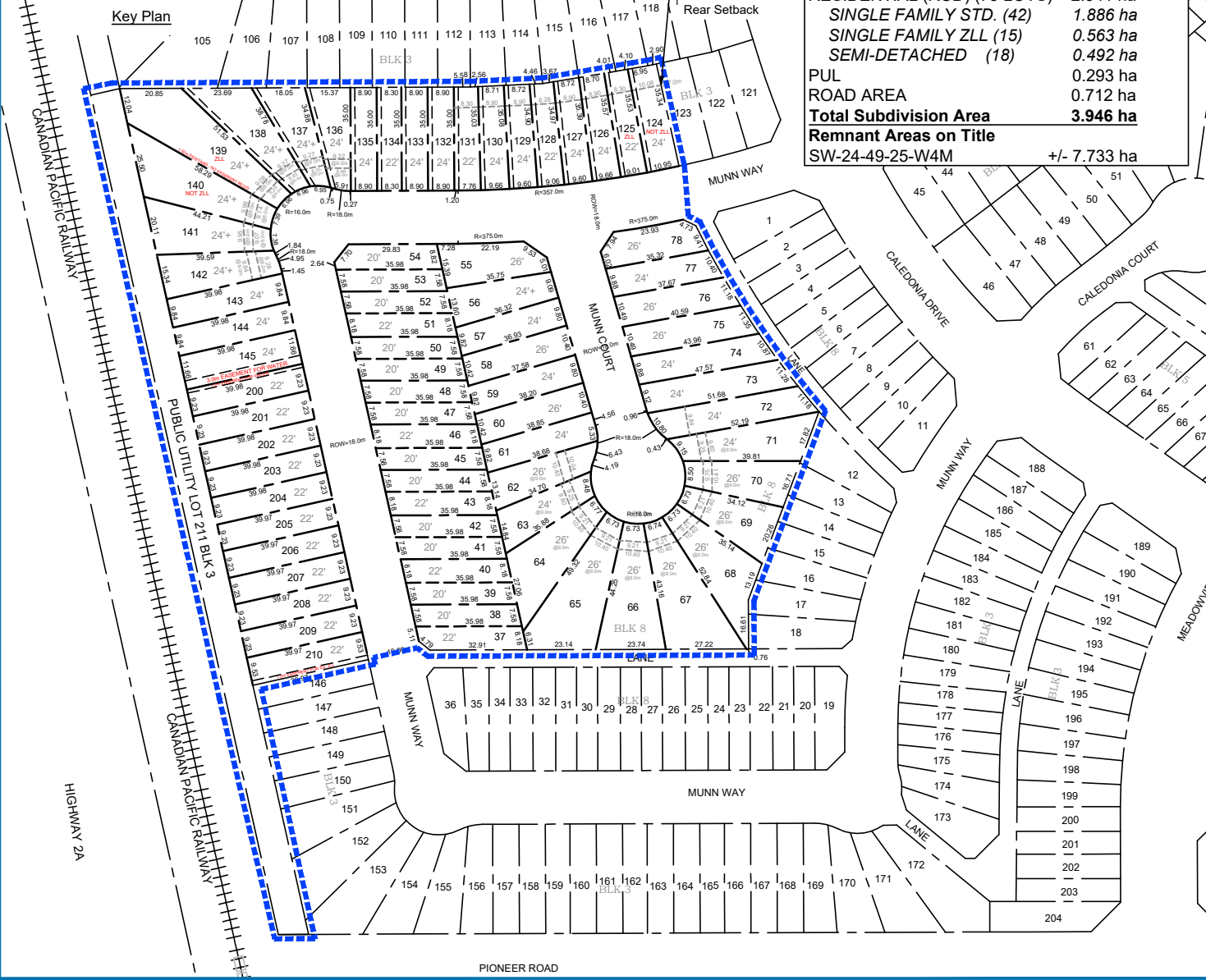


**Meadowview Stage 21  
Subdivision Information**

<b>Total Title Area</b> SW-24-49-25-W4M	11.679 ha
<b>Subdivision Area</b>	
RESIDENTIAL (RCD) (75 LOTS)	2.941 ha
SINGLE FAMILY STD. (42)	1.886 ha
SINGLE FAMILY ZLL (15)	0.563 ha
SEMI-DETACHED (18)	0.492 ha
PUL	0.293 ha
ROAD AREA	0.712 ha
<b>Total Subdivision Area</b>	<b>3.946 ha</b>
<b>Remnant Areas on Title</b> SW-24-49-25-W4M	+/- 7.733 ha

**Key Plan**



**Legend**

- Stage 21 Subdivision Boundary
- Existing Property Lines
- Proposed Property Lines
- 10.40 Lot Width at Setback As Noted

Image Source: Google Maps

Scale 1:2,000  
November 5, 2024 V2



**APPROVED**

DIRECTOR OF PLANNING & ECONOMIC DEVELOPMENT

File No: PLSDA202401358 Date: Jan. 3, 2025

**CITY OF LEDUC SUBDIVISION AUTHORITY**  
Approval valid for twelve months • Subject to conditions

**MEADOWVIEW  
STAGE 21 SUBDIVISION**

Figure \_\_\_\_\_

Map 2

Title \_\_\_\_\_

**Tentative Plan of Subdivision**