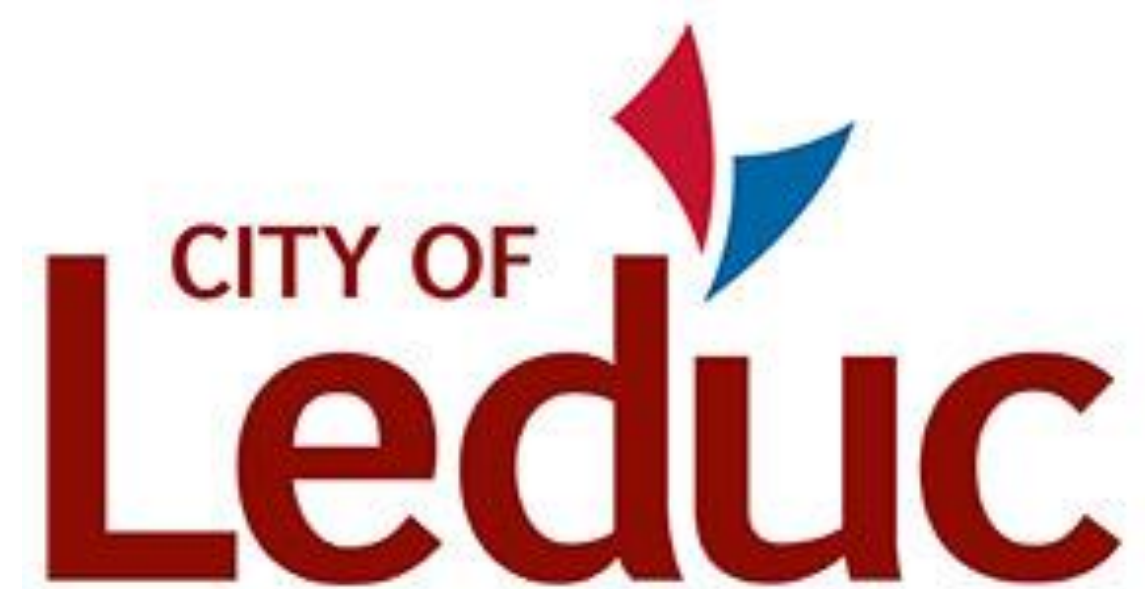
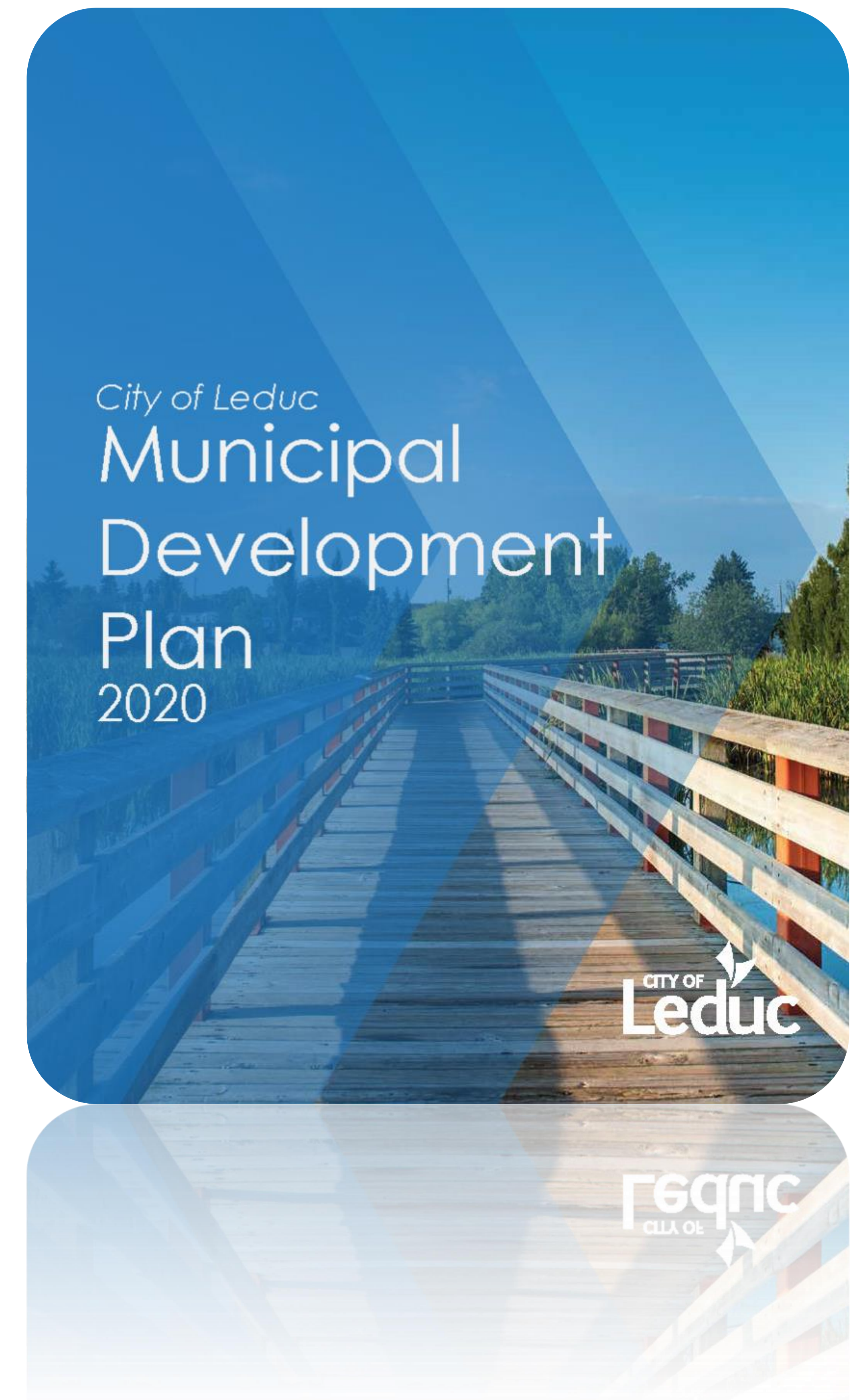
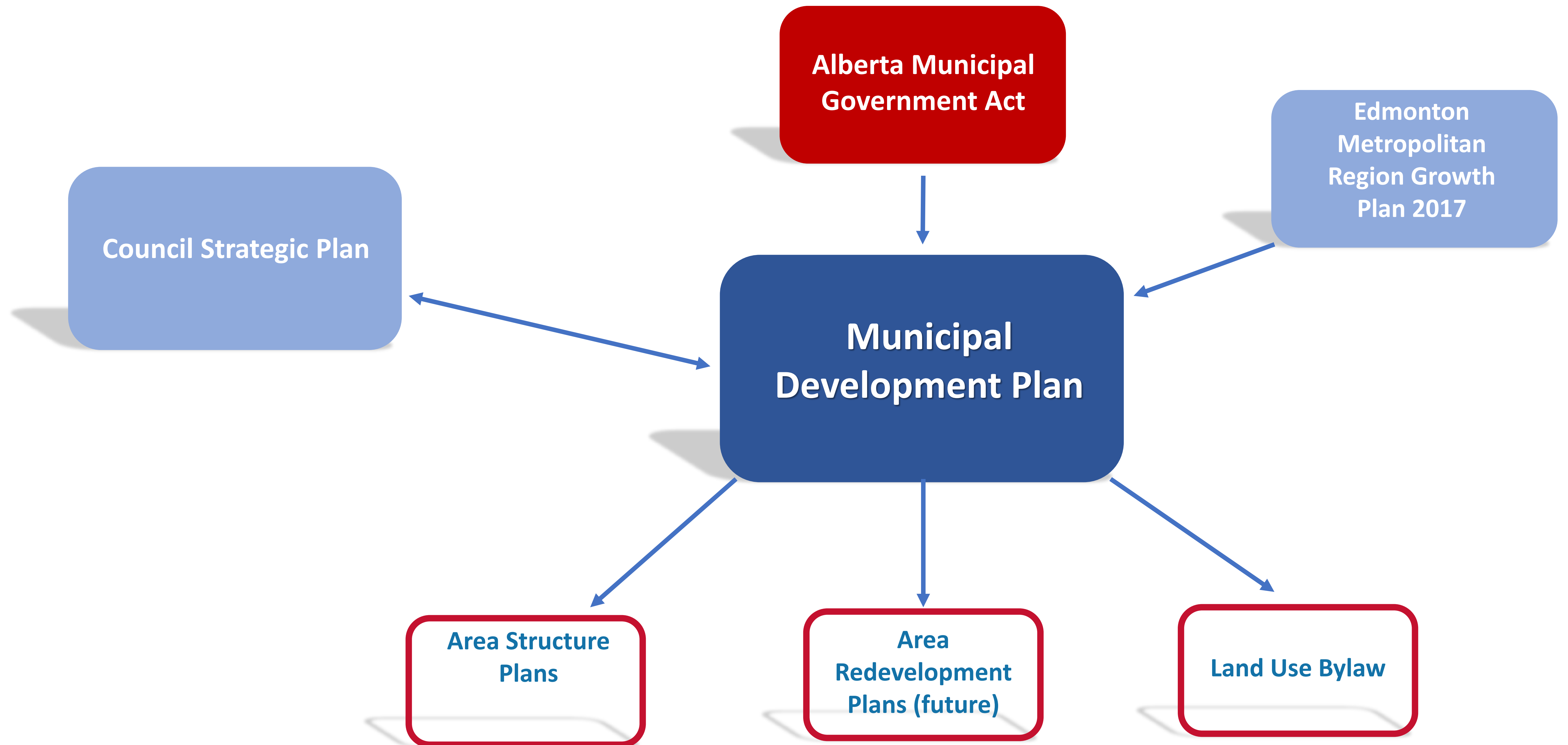


Bylaw No. 1166-2023 Municipal Development Plan Amendment

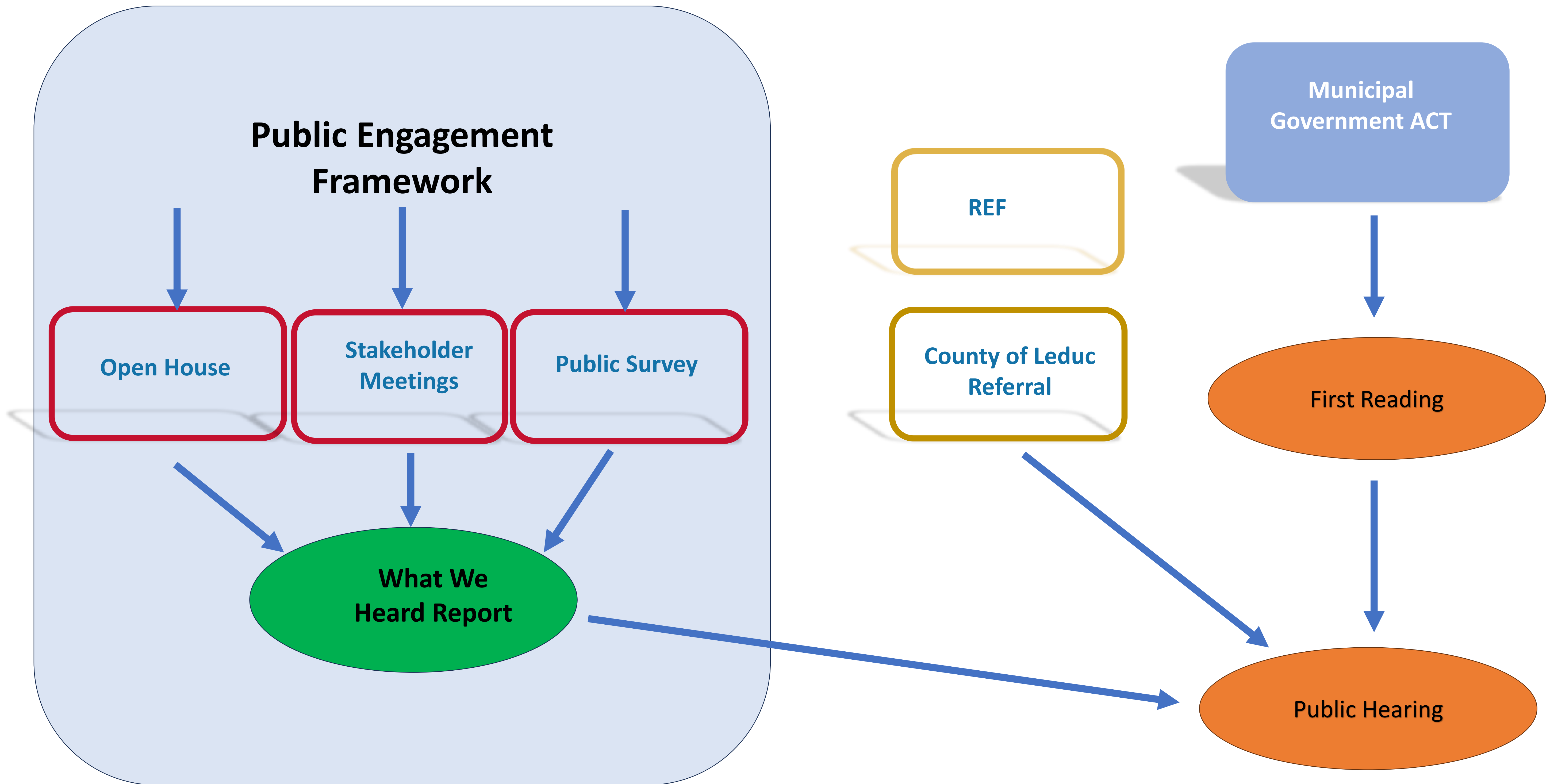
August 19, 2024 Public Hearing



Municipal Development Plan Amendment Context

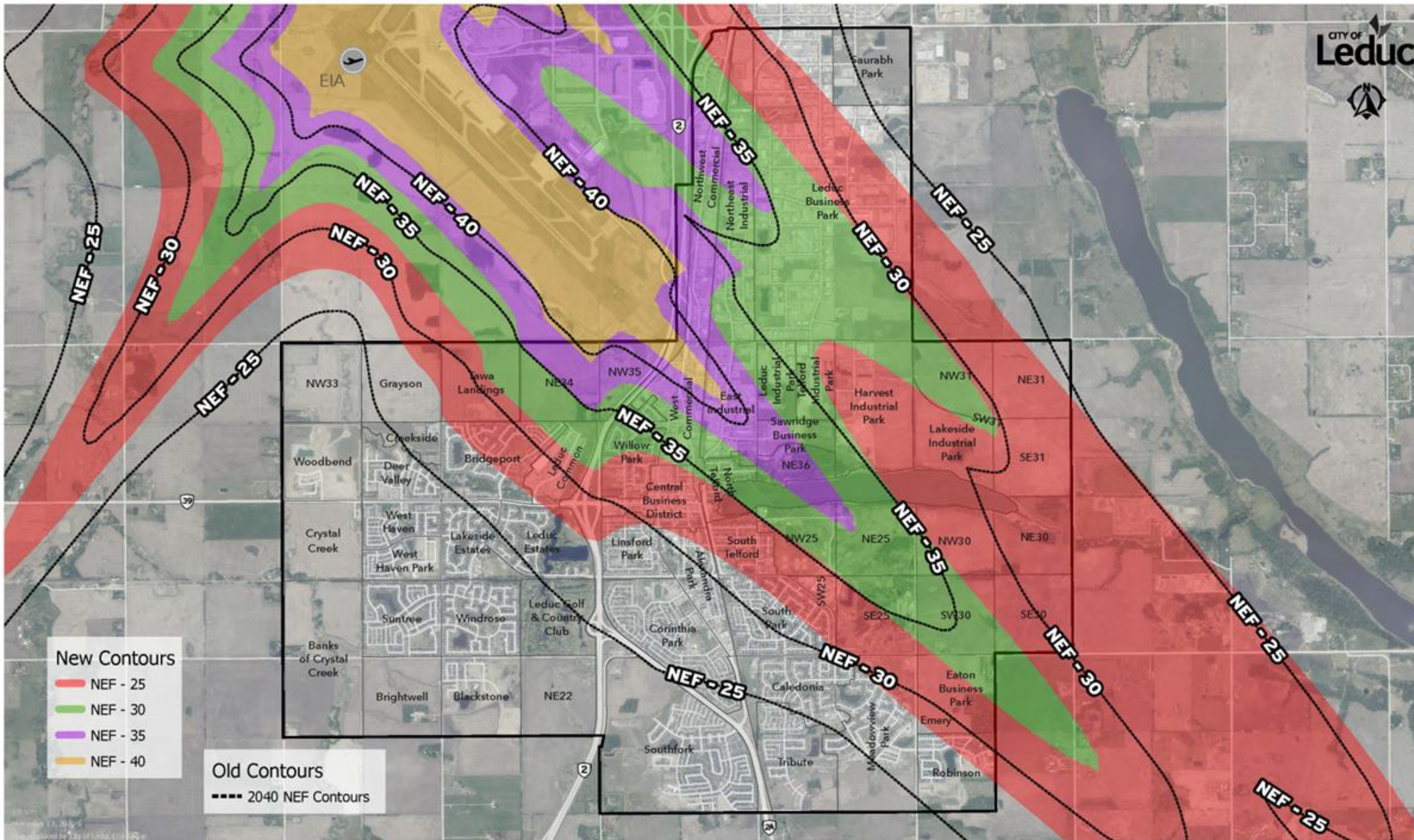


Public Engagement



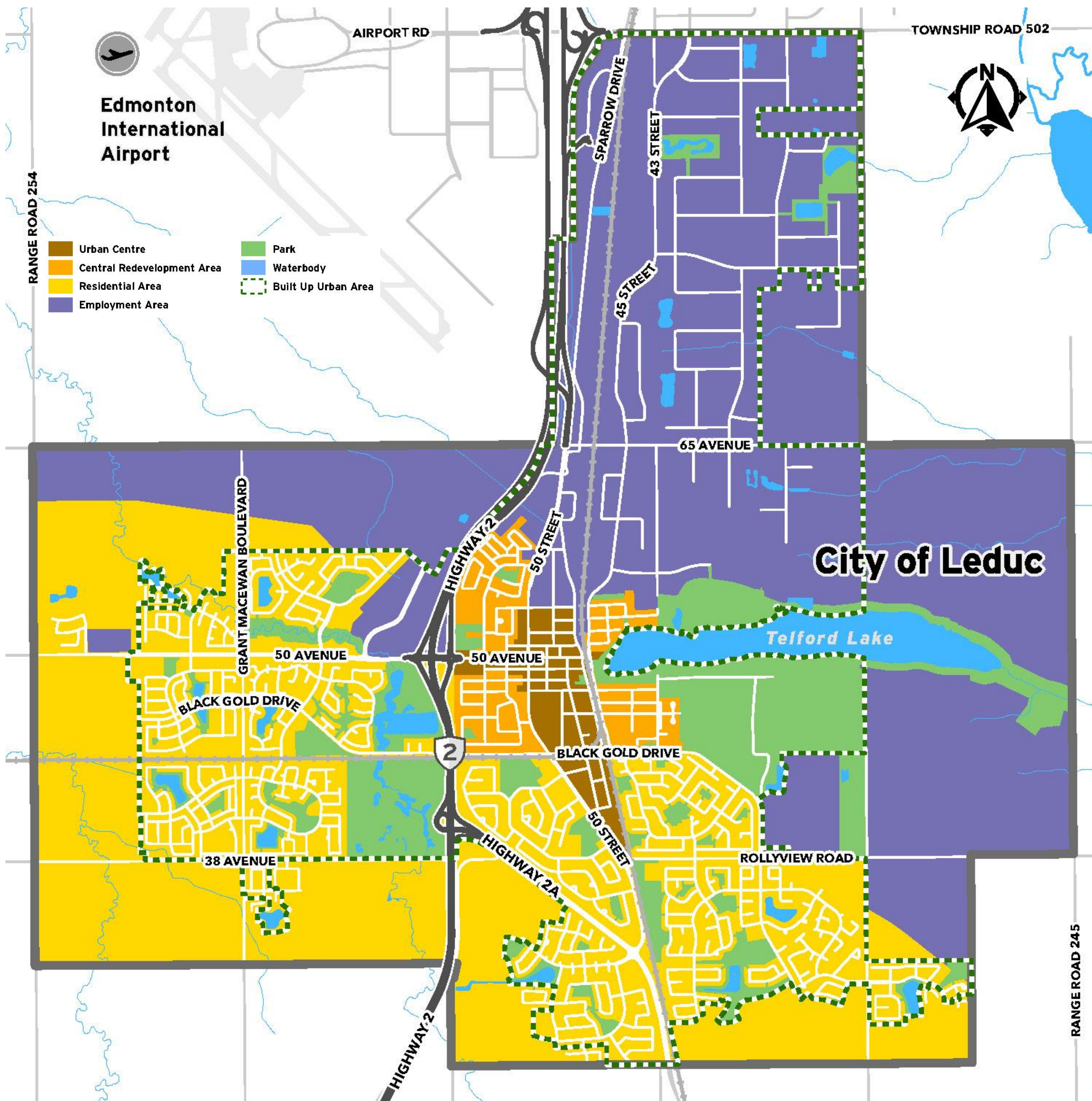
Airport Vicinity Protection Area Amendments

AVPA CONTOURS- NEW VS. OLD

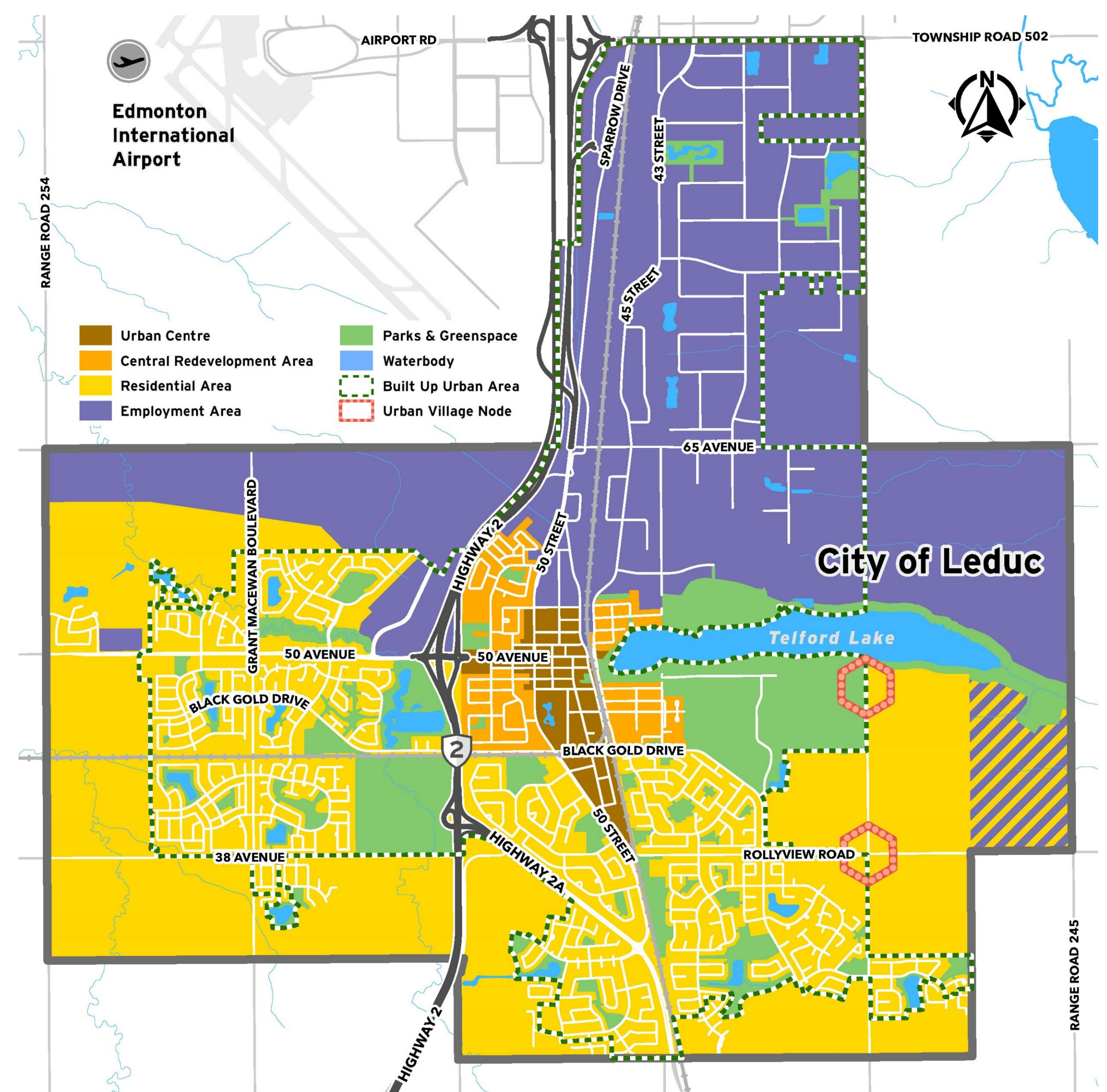


Proposed Land Use Amendments

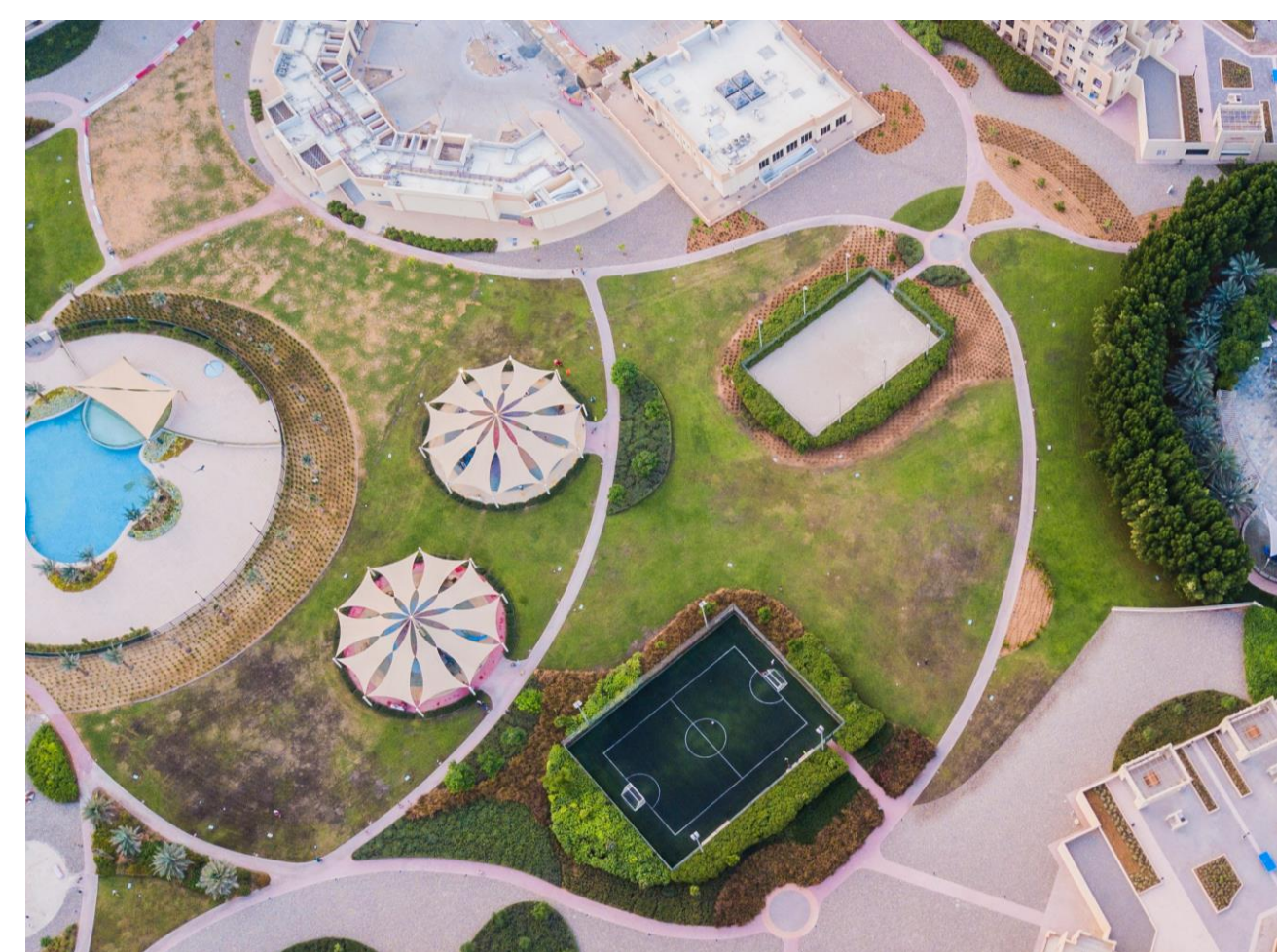
Current Figure 10: Policy Areas



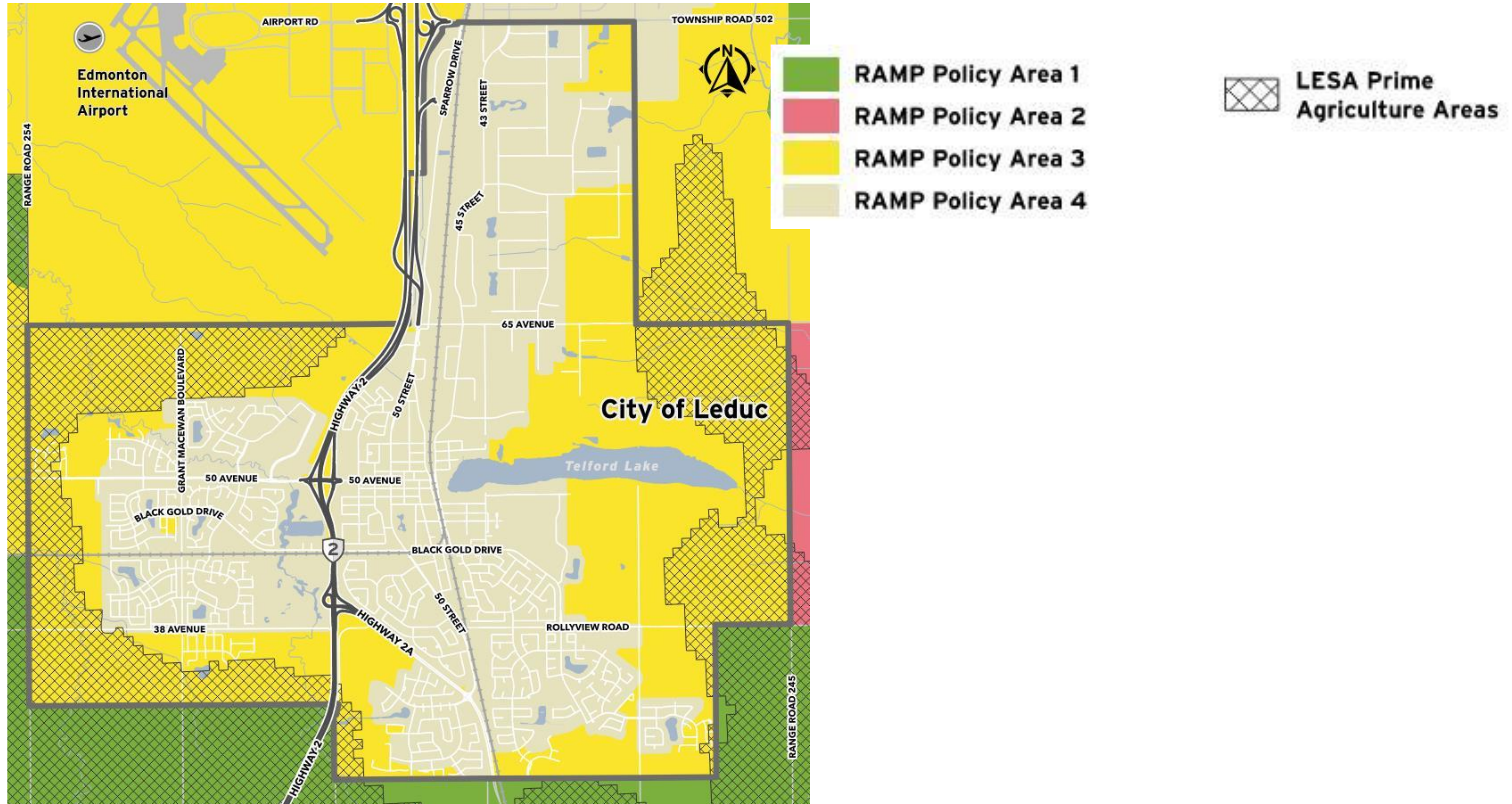
Proposed Figure 10: Policy Areas



Urban Village Nodes



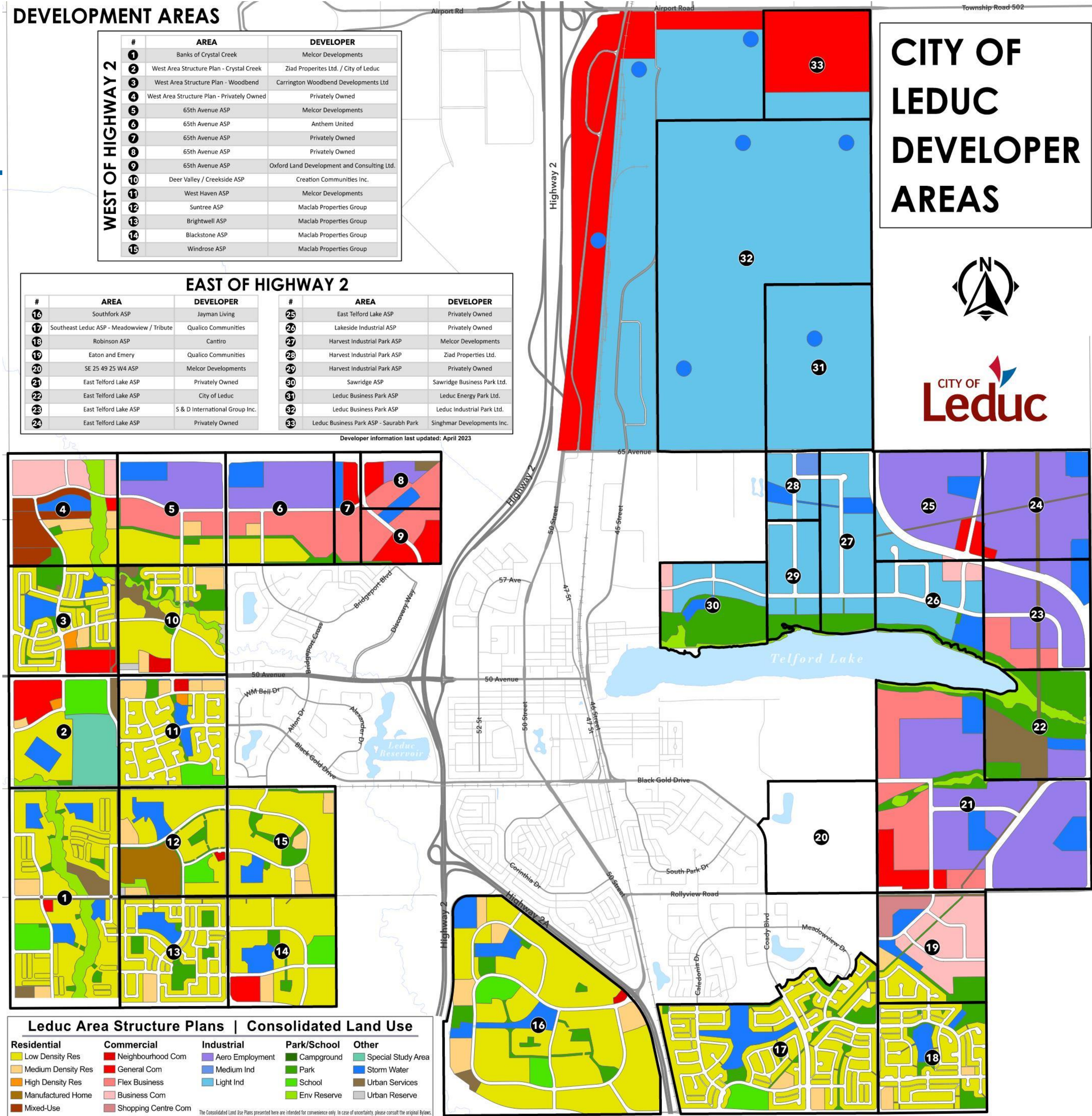
RAMP



Area Structure Plans

Development Area:

- 19 – Eaton and Emery ASP (Qualico)
- 20 – SE 25-49-25-W4M ASP (Melcor)
- 21 – East Telford Lake ASP (Privately owned)
- 22 – East Telford Lake ASP (City of Leduc)



CITY OF LEDUC DEVELOPER AREAS



Bylaw No. 1166-2023 Municipal Development Plan Amendment

Questions?

